

LIGHTING FIXTURE

NO.	DESCRIPTION	TYPE	QTY	REMARKS
1	RELAY ROOM	FE-2	17	
2	RCCR	FF-4	13	
3	COMPUTER ROOM	FE-2	4	
4	POWER PLANT CONTROL ROOM	FF-4	10	
5	SUPERVISOR'S OFFICE	FE-2	4	
6	OPERATOR TRAINING ROOM	FE-2	4	
7	MEETING ROOM	FE-2	6	
8	DINING ROOM	FE-2	6	
9	CORRIDOR	FE-2	5	
10	AIR LOCK-1	FE-2	1	
11	AIR LOCK-2	FE-2	1	
12	LOCKER/SHOWER(M)	FH-2	2	
		FJ-2	2	
13	LOCKER/SHOWER(W)	FH-2	2	
		FJ-2	2	
14	TOILET(M)	FJ-2	5	
15	TOILET(W)	FJ-2	5	
16	STAIR	SB-2	2	

REFERENCE DRAWINGS

- SYMBOL & LEGEND FOR LIGHTING LAYOUT
SEE DWG. NO. ZP00700-B1CE-EEG-DRG-0900
- LIGHTING FIXTURE SCHEDULE
SEE DWG. NO. ZP00700-B1CE-EEG-DRG-0901
- INSTALLATION DETAIL FOR LIGHTING LAYOUT (1/2)
SEE DWG. NO. ZP00700-B1CE-EEG-DRG-0902
- INSTALLATION DETAIL FOR LIGHTING LAYOUT (2/2)
SEE DWG. NO. ZP00700-B1CE-EEG-DRG-0903
- LIGHTING LAYOUT FOR ELECTRICAL ANNEX MEZZANINE FL. (1/2)
SEE DWG. NO. ZP00700-B1CE-EEG-DRG-0905
- LIGHTING PANEL BOARD SCHEDULE-1
SEE DWG. NO. ZP00700-B1CE-EEG-DRG-0919
- LIGHTING PANEL BOARD SCHEDULE-2
SEE DWG. NO. ZP00700-B1CE-EEG-DRG-0920

NOTE

- WIRE & CONDUIT FOR LIGHTING BRANCH CIRCUITS SHALL BE AS FOLLOWS EXCEPT AS NOTED ON THE DRAWINGS :
 - A) LIGHTING
 - HFIX 2-4mm² GROUND WIRE HFIX 4mm² (22C)
 - HFIX 4-4mm² GROUND WIRE HFIX 4mm² (22C)
 - HFIX 6-4mm² GROUND WIRE HFIX 4mm² (28C)
 - HFIX 8-4mm² GROUND WIRE HFIX 4mm² (28C)
 - B) RECEPTACLE
 - HFIX 2-6mm² GROUND WIRE HFIX 4mm² (22C)
 - HFIX 4-6mm² GROUND WIRE HFIX 4mm² (28C)
- : CONDUIT (EXPOSED)
 - - - : CONDUIT (EMBEDDED IN CEILING OR WALL)
 - - - : CONDUIT (EMBEDDED IN CONCRETE SLAB OR UNDERGROUND)

CERTIFIED AS-BUILT

REV.	DATE	REASON FOR REVISION	DRAWN	CHECKED	APPROVED
1	31/AUG/2014	CERTIFIED AS-BUILT	H.W.JANG	K.C.KIM	S.H.SONG
0	22/OCT/2012	FOR CONSTRUCTION	H.W.JANG	K.C.KIM	S.H.SONG

EMPLOYER : Kenya Electricity Generating Company Ltd.
Stima Plaza, Phase III
Kolobot Road,
P.O. Box 47936 - 00100 GPO,
Nairobi, KENYA.
Tel : +254 20 3666000
Fax : +254 20 2456448

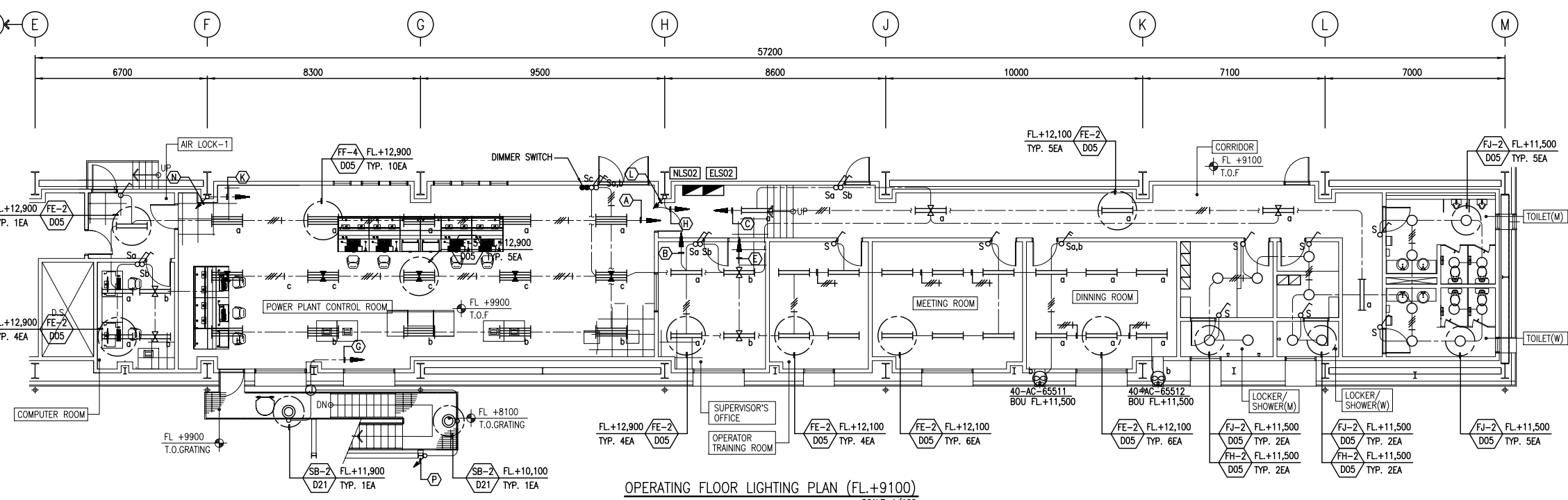
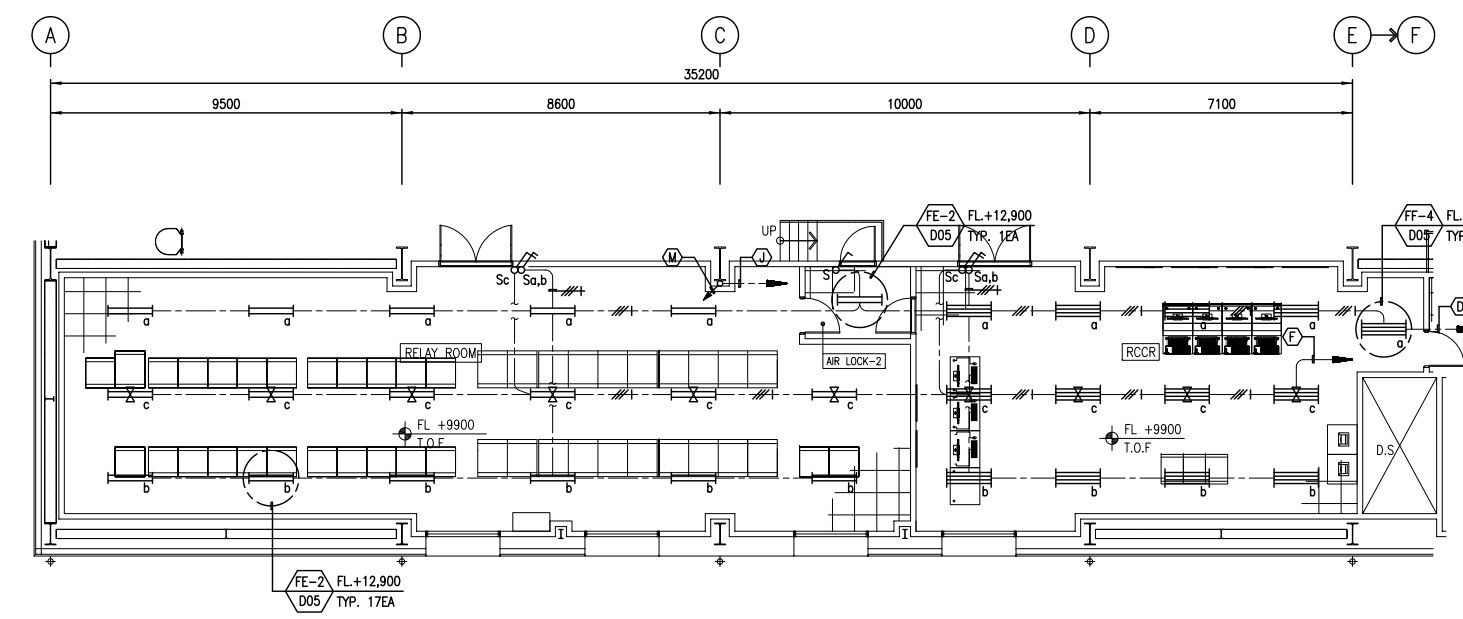
CONSULTANT : SKM
Sinclair Knight Merz Ltd
Carlisle Park Commercial,
12-16 Nicholls Lane, Parnell, Auckland,
NEW ZEALAND.
Tel : +64 9 928 5500
Fax : +64 9 928 5501

EPC CONTRACTOR : HYUNDAI ENGINEERING CO., LTD. TOYOTA TSUSHO CORPORATION
Hyundai 41 Tower, Mok 1-dong, Yangcheon-gu, Seoul, KOREA
Toyota Tsusho Corporation
3-13, Konan 2-chome, Minato-ku, Tokyo, JAPAN
Tel : +82 2 2168 8573 Fax : +82 2 2643 0773
Tel : +81 3 4306 3200 Fax : +81 3 4306 8908

PRODUCT : OLKARIA IAU GEOTHERMAL POWER PLANT

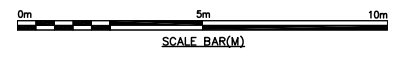
DESIGNED BY	DATE	TIME
H.W.JANG	27/02/2014	
DESIGNED BY	DATE	
H.W.JANG	25/02/2014	
CHECKED BY	DATE	
K.C.KIM	27/02/2014	
APPROVED BY	DATE	
S.H.SONG	27/02/2014	
DRAWING SCALE	DRAWING NUMBER	REV.
1/100	ZP00700-B1CE-EEG-DRG-0906	1

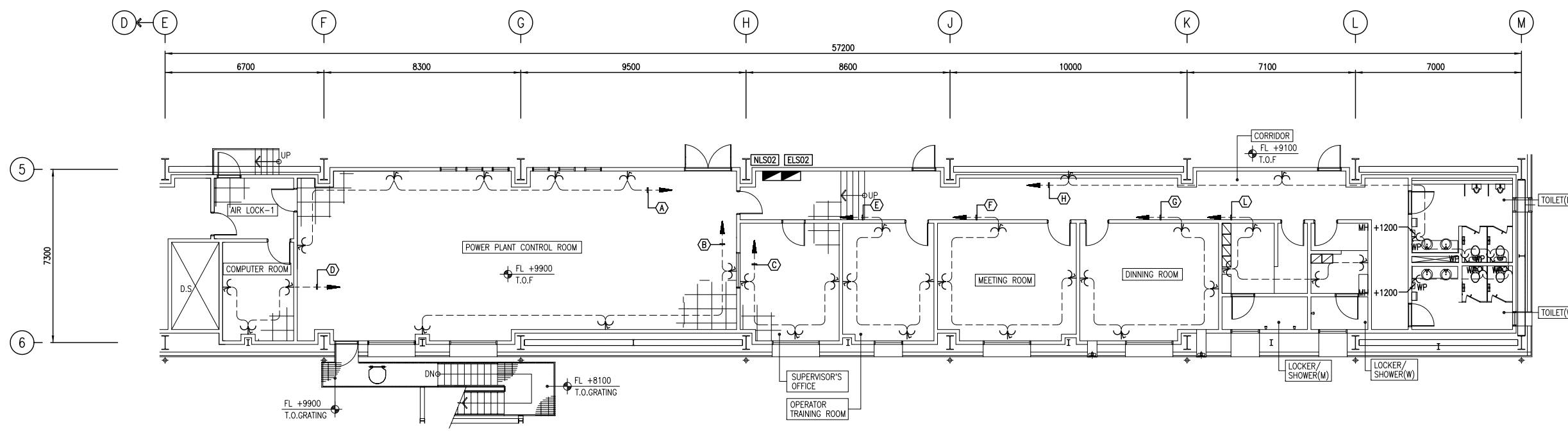
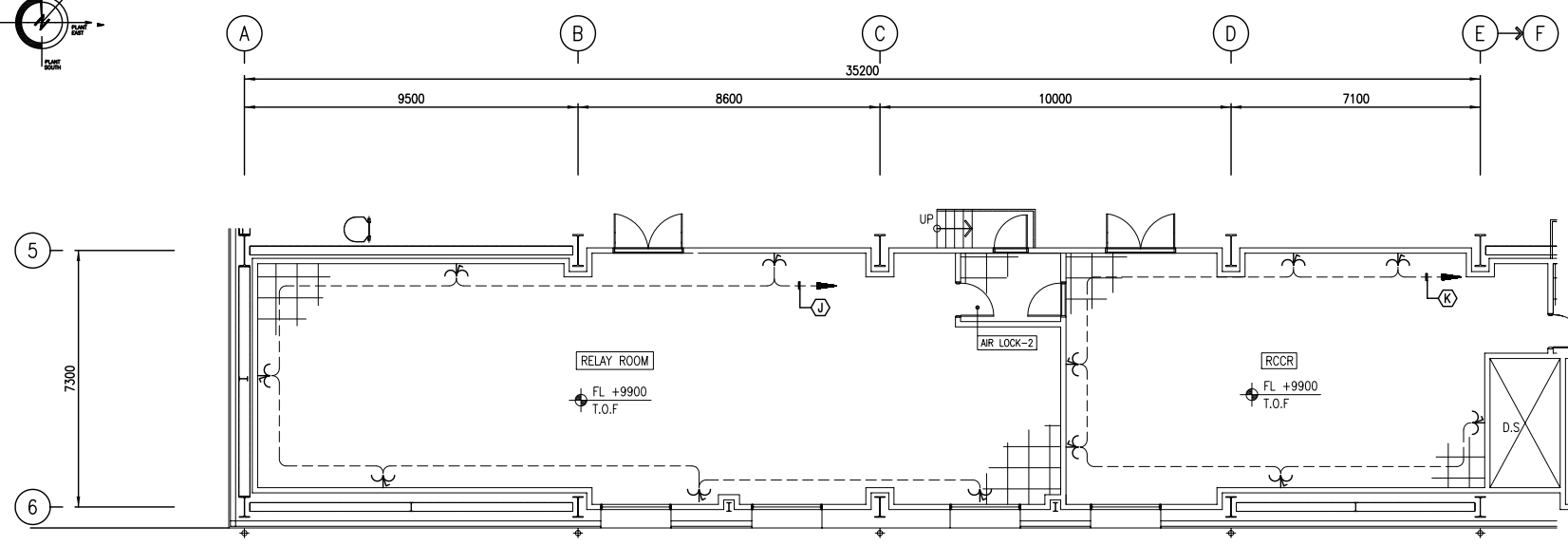
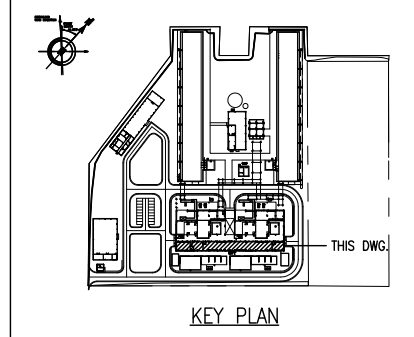
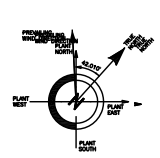
LIGHTING LAYOUT FOR ELECTRICAL ANNEX OPERATING FLOOR (1/2)



OPERATING FLOOR LIGHTING PLAN (FL.+9100)
SCALE=1/100

- A) (NLS02-N01) HFIX 2-4mm² GROUND WIRE HFIX 4mm² (22C)
- B) (NLS02-N02) HFIX 2-4mm² GROUND WIRE HFIX 4mm² (22C)
- C) (NLS02-N03) HFIX 2-4mm² GROUND WIRE HFIX 4mm² (22C)
- D) (NLS02-N04) HFIX 2-4mm² GROUND WIRE HFIX 4mm² (22C)
- E) (ELS02-E01) HFIX 2-4mm² GROUND WIRE HFIX 4mm² (22C)
- F) (ELS02-E02) HFIX 2-4mm² GROUND WIRE HFIX 4mm² (22C)
- G) (NLS02-N05) HFIX 2-4mm² GROUND WIRE HFIX 4mm² (22C)
- H) (ELS02-E03) HFIX 2-4mm² GROUND WIRE HFIX 4mm² (22C)
- J) (ELS02-E04) HFIX 2-4mm² GROUND WIRE HFIX 4mm² (22C)
- K) (ELS02-E05) HFIX 2-4mm² GROUND WIRE HFIX 4mm² (22C)
- L) DN TO MEZZANINE FL. (ELS02-E03) HFIX 2-4mm² GROUND WIRE HFIX 4mm² (22C)
- M) DN TO MEZZANINE FL. (ELS02-E04) HFIX 2-4mm² GROUND WIRE HFIX 4mm² (22C)
- N) DN TO MEZZANINE FL. (ELS02-E05) HFIX 2-4mm² GROUND WIRE HFIX 4mm² (22C)
- P) DN TO MEZZANINE FL. (NLS02-N05) HFIX 2-4mm² GROUND WIRE HFIX 4mm² (22C)





OPERATING FLOOR RECEPTACLE PLAN (FL.+9100)
SCALE=1/100

- | | | |
|--|--|--|
| A) (NLS02-N11)
HFIX 2-6mm ²
GROUND WIRE HFIX 4mm ² (22C) | E) (NLS02-N15)
HFIX 2-6mm ²
GROUND WIRE HFIX 4mm ² (22C) | J) (NLS02-N19)
HFIX 2-6mm ²
GROUND WIRE HFIX 4mm ² (22C) |
| B) (NLS02-N12)
HFIX 2-6mm ²
GROUND WIRE HFIX 4mm ² (22C) | F) (NLS02-N16)
HFIX 2-6mm ²
GROUND WIRE HFIX 4mm ² (22C) | K) (NLS02-N20)
HFIX 2-6mm ²
GROUND WIRE HFIX 4mm ² (22C) |
| C) (NLS02-N13)
HFIX 2-6mm ²
GROUND WIRE HFIX 4mm ² (22C) | G) (NLS02-N17)
HFIX 2-6mm ²
GROUND WIRE HFIX 4mm ² (22C) | L) (NLS02-N21)
HFIX 2-6mm ²
GROUND WIRE HFIX 4mm ² (22C) |
| D) (NLS02-N14)
HFIX 2-6mm ²
GROUND WIRE HFIX 4mm ² (22C) | H) (NLS02-N18)
HFIX 2-6mm ²
GROUND WIRE HFIX 4mm ² (22C) | |

- REFERENCE DRAWINGS**
- SYMBOL & LEGEND FOR LIGHTING LAYOUT
SEE DWG. NO. ZP00700-B1CE-EEG-DRG-0900
 - LIGHTING FIXTURE SCHEDULE
SEE DWG. NO. ZP00700-B1CE-EEG-DRG-0901
 - INSTALLATION DETAIL FOR LIGHTING LAYOUT (1/2)
SEE DWG. NO. ZP00700-B1CE-EEG-DRG-0902
 - INSTALLATION DETAIL FOR LIGHTING LAYOUT (2/2)
SEE DWG. NO. ZP00700-B1CE-EEG-DRG-0903
 - LIGHTING LAYOUT FOR ELECTRICAL ANNEX MEZZANINE FL. (2/2)
SEE DWG. NO. ZP00700-B1CE-EEG-DRG-0905
 - LIGHTING PANEL BOARD SCHEDULE-1
SEE DWG. NO. ZP00700-B1CE-EEG-DRG-0919
 - LIGHTING PANEL BOARD SCHEDULE-2
SEE DWG. NO. ZP00700-B1CE-EEG-DRG-0920

- NOTE**
- WIRE & CONDUIT FOR LIGHTING BRANCH CIRCUITS SHALL BE AS FOLLOWS EXCEPT AS NOTED ON THE DRAWINGS :
 - A) LIGHTING
 - HFIX 2-4mm²
GROUND WIRE HFIX 4mm² (22C)
 - HFIX 4-4mm²
GROUND WIRE HFIX 4mm² (22C)
 - HFIX 6-4mm²
GROUND WIRE HFIX 4mm² (28C)
 - HFIX 8-4mm²
GROUND WIRE HFIX 4mm² (28C)
 - B) RECEPTACLE
 - HFIX 2-6mm²
GROUND WIRE HFIX 4mm² (22C)
 - HFIX 4-6mm²
GROUND WIRE HFIX 4mm² (28C)
 - : CONDUIT (EXPOSED)
 - - - : CONDUIT (EMBEDDED IN CEILING OR WALL)
 - - - : CONDUIT (EMBEDDED IN CONCRETE SLAB OR UNDERGROUND)

CERTIFIED AS-BUILT

REV.	DATE	REASON FOR REVISION	DRAWN	CHECKED	APPROVED
1	31/08/2014	CERTIFIED AS-BUILT	H.W.JANG	K.C.KIM	S.H.SONG
0	22/07/2012	FOR CONSTRUCTION	H.W.JANG	K.C.KIM	S.H.SONG

EMPLOYER :
 KenGen
 KenGen Electricity Generating Company Ltd.
 Stima Plaza, Phase III
 Kolobot Road,
 P.O. Box 47936 - 00100 GPO,
 Nairobi, KENYA.
 Tel : +254 20 3666000
 Fax : +254 20 245848

CONSULTANT :
 SKM
 Sinclair Knight Merz Ltd
 Carlaw Park Commercial,
 12-16 Nicholls Lane, Parnell, Auckland,
 NEW ZEALAND.
 Tel : +64 9 928 5500
 Fax : +64 9 928 5501

EPC CONTRACTOR :
 HYUNDAI ENGINEERING CO., LTD.
 Hyundai 41 Tower, Mok 1-dong, Yangcheon-gu, Seoul, KOREA
 Tel : +82 2 2186 8573
 Fax : +82 2 2643 0773

TOYOTA TSUSHO CORPORATION
 Toyota Tsusho Corporation
 3-13, Konan 2-chome, Minato-ku, Tokyo, JAPAN
 Tel : +81 3 4306 3200
 Fax : +81 3 4306 8908

PROJECT :
 OLKARIA IAU GEOTHERMAL POWER PLANT

DESIGNED BY	DATE	TITLE
H.W.JANG	07/08/2014	LIGHTING LAYOUT FOR ELECTRICAL ANNEX OPERATING FLOOR (2/2)
DESIGNED BY	DATE	TITLE
H.W.JANG	05/08/2014	LIGHTING LAYOUT FOR ELECTRICAL ANNEX OPERATING FLOOR (2/2)
CHECKED BY	DATE	TITLE
K.C.KIM	07/08/2014	LIGHTING LAYOUT FOR ELECTRICAL ANNEX OPERATING FLOOR (2/2)
APPROVED BY	DATE	TITLE
S.H.SONG	07/08/2014	LIGHTING LAYOUT FOR ELECTRICAL ANNEX OPERATING FLOOR (2/2)
DRAWING SCALE	DRAWING NUMBER	REV.
1/100	ZP00700-B1CE-EEG-DRG-0906	1

