

ALL DIMENSIONS AND LEVELS ARE TO BE VERIFIED ON SITE BY THE CONTRACTOR BEFORE COMMENCING ANY WORK

THE COPYRIGHT IN THIS DRAWING, INCLUDING THE DESIGN AND DETAILS SHOWN HEREON, IS RESERVED BY THE ENGINEERS.

THIS DRAWING IS NOT TO BE USED IN WHOLE OR PART OTHER THAN FOR THE INTENDED, PURPOSE AND PROJECT, AS DEFINED ON THIS DRAWING. REFER TO THE CONTRACT FOR FULL TERMS AND CONDITIONS.



**GENERAL NOTES**

- CARBON STEEL MATERIAL MUST BE USED ON ALL CONSTRUCTIONS OTHER THAN THE ACOUSTIC TUBES
- CONTINUOUS WELDING MUST BE USED
- ALL DIMENSIONS ARE IN MM OR OTHERWISE STATED
- 5/8" DIAMETER 90 MM LONG FULL THREAD BOLTS, NUTS AND WASHERS 72 NOS ARE REQUIRED FOR ASSEMBLY
- THE SILENCER MUST BE FULL ASSEMBLED AT THE FABRICATORS YARD/WORKSHOP
- KENGEN REPRESENTATIVE MUST INSPECT THE SILENCERS AT EVERY STAGE OF FABRICATION

No	DATE	DETAILS REVISIONS	Chd	Appd



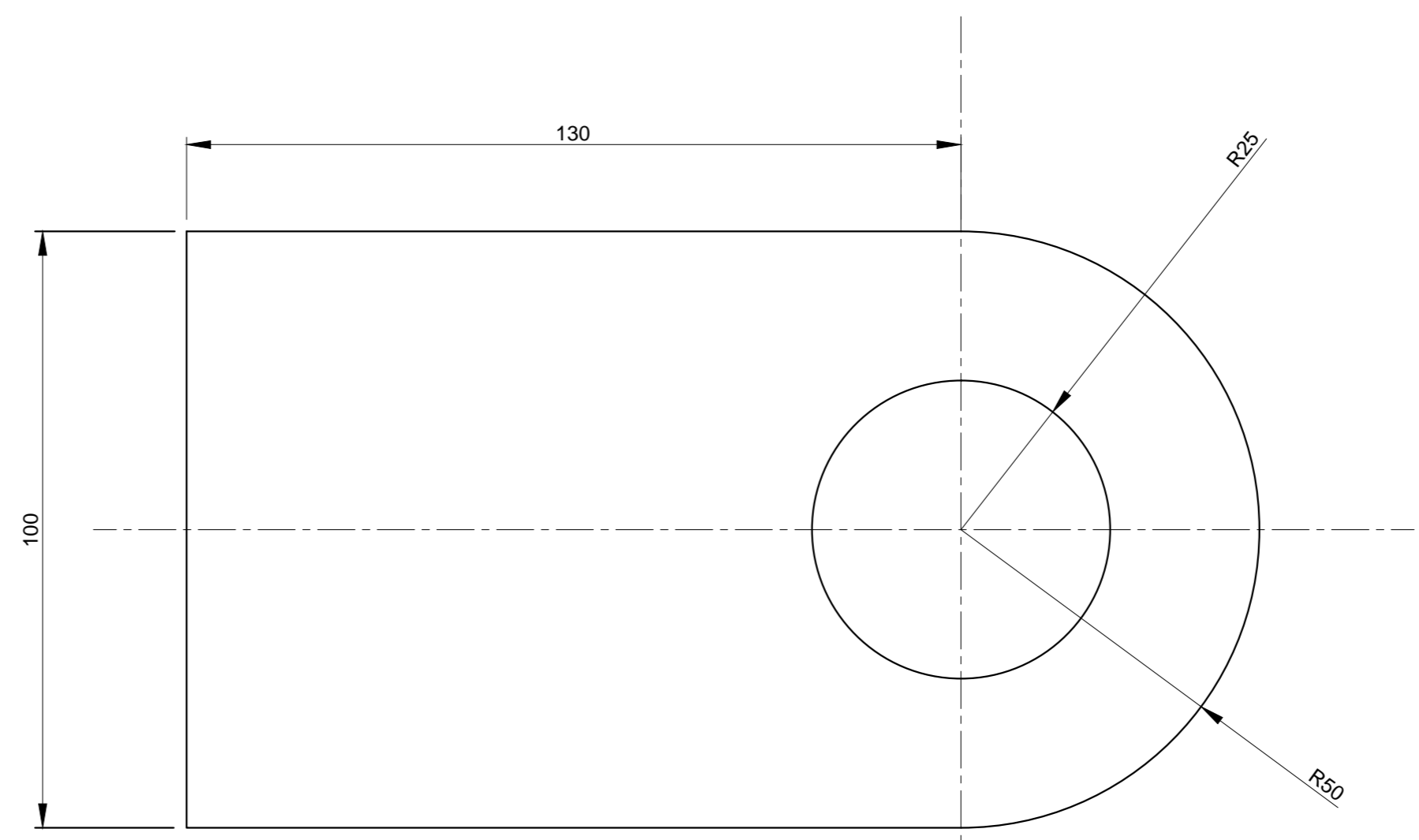
APPROVALS	NAME	SIGN	DATE
Designed by:	ERIC ROP & PHILIP NJUGUNA		
Drawn by:	ERIC ROP		
Checked by:	NICHOLUS OMENYA		
Approved by:	PETER OUMA		

Project **IMPROVED SILENCER DESIGN FOR OLKARIA**

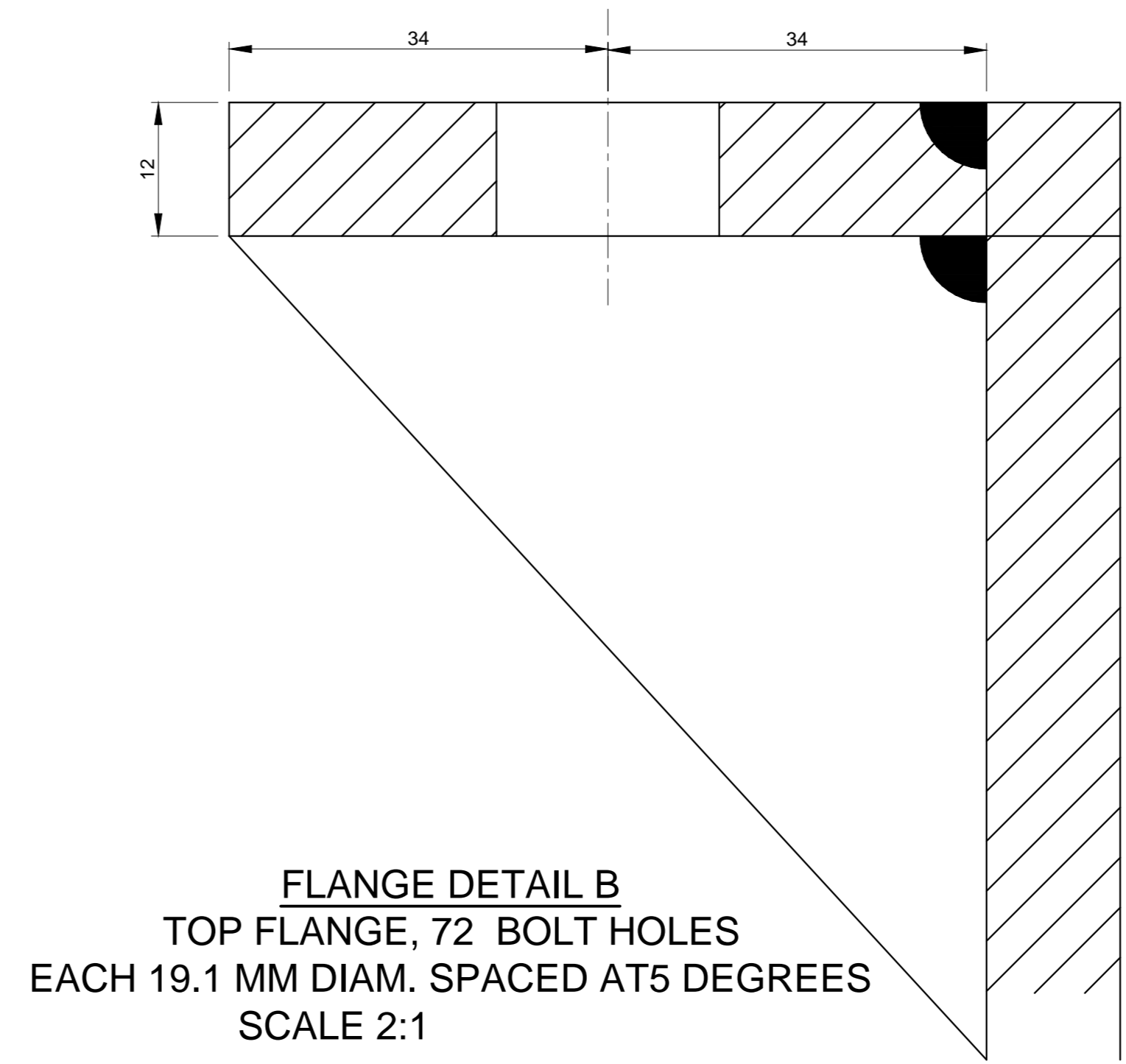
Description **SILENCER TYPE 1  
DETAIL A, B, C AND D**

Scale **VARIES** Date **MARCH 2017**

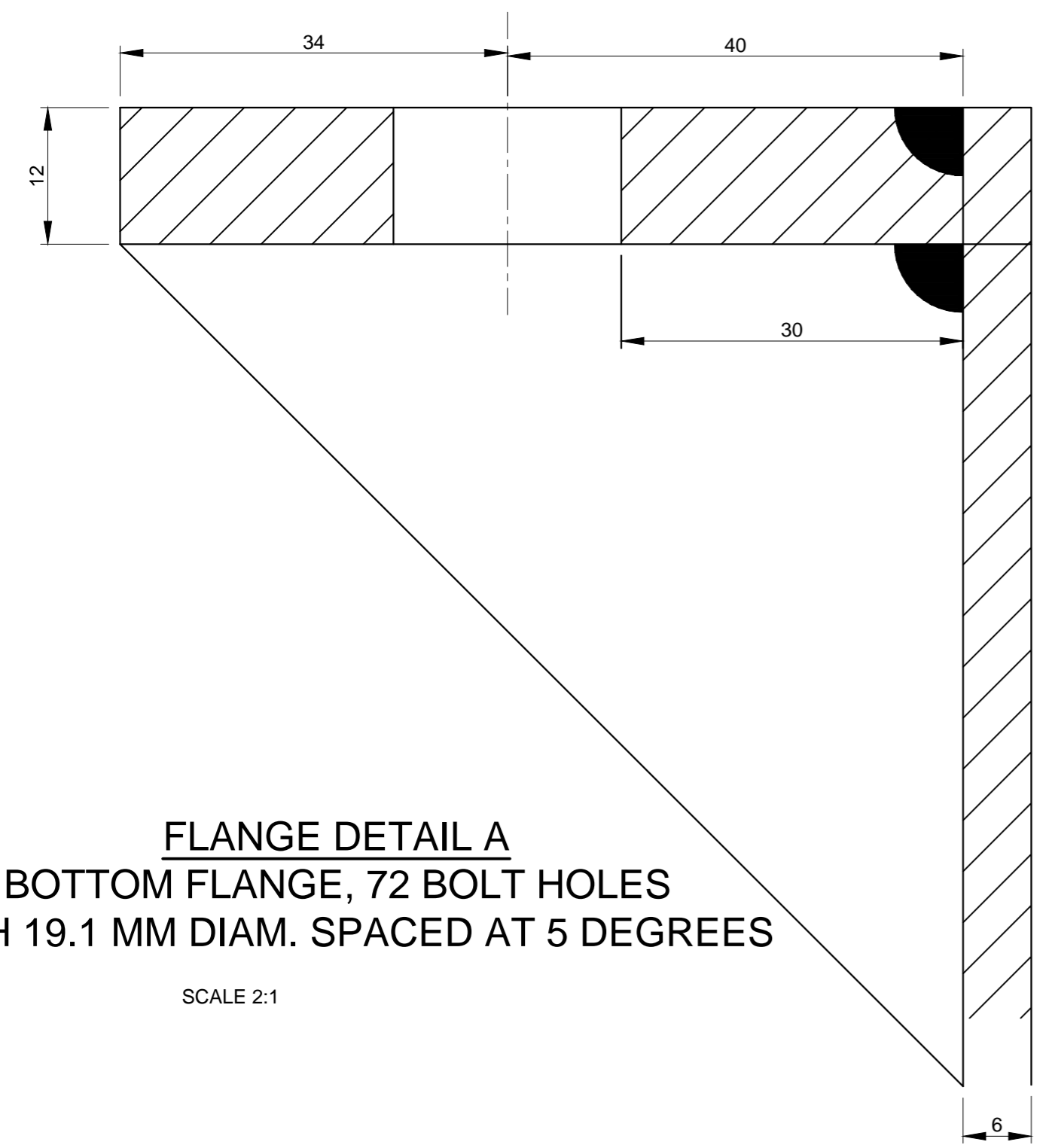
Drg.No **OLK/R.ENG/TYP/1/6** Rev. No



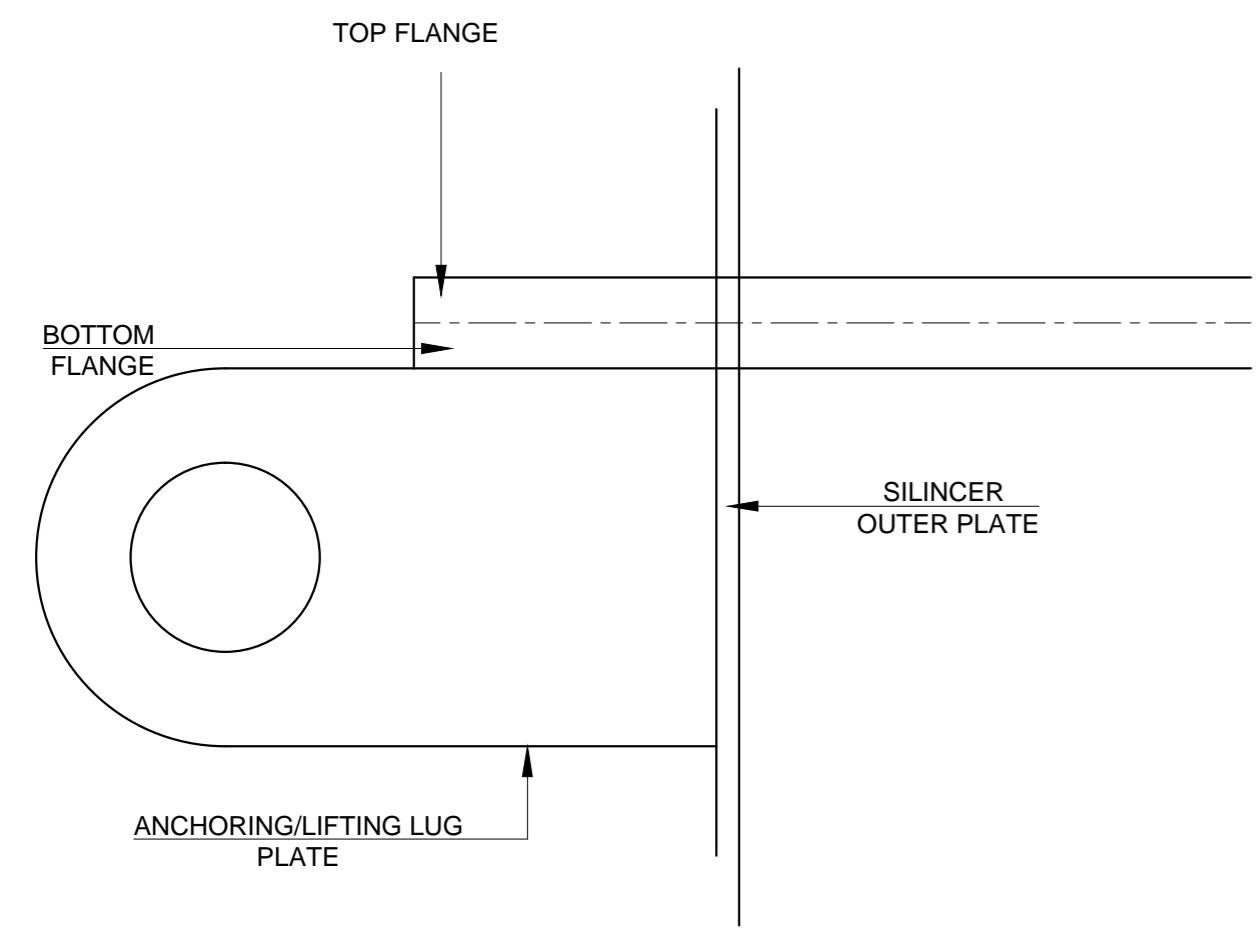
LIFTING LUG  
DETAIL C  
SCALE 2:1



FLANGE DETAIL B  
TOP FLANGE, 72 BOLT HOLES  
EACH 19.1 MM DIAM. SPACED AT 5 DEGREES  
SCALE 2:1



FLANGE DETAIL A  
BOTTOM FLANGE, 72 BOLT HOLES  
EACH 19.1 MM DIAM. SPACED AT 5 DEGREES  
SCALE 2:1



ANCHORING PLATE ORIENTATION  
DETAIL D  
SCALE 1:2