



KenGen

TENDER NO. KGN-SBP-02-2018

DATE: 19/03/2018

KENYA ELECTRICITY GENERATING COMPANY

TENDER FOR DESIGN, SUPPLY, INSTALLATION, TESTING AND COMMISSIONING OF SMART SOLAR GRID-TIE SYSTEM FOR KIPEVU OFFICE BLOCK, INTEGRATED SOLAR STREET LIGHTING AND LED RETROFIT MAST LIGHTING AT KIPEVU

CLARIFICATION No .1

In accordance with the Tender for Design, Supply, Installation, Testing and Commissioning of Smart Solar Grid-Tie System for Kipevu Office Block, Integrated Solar Street Lighting and LED Retrofit Mast Lighting at Kipevu hereby issues Clarification No.1

RESPONSE TO REQUEST FOR CLARIFICATION

	CLARIFICATION	KenGen RESPONSE
1.	In page 37 of the tender document, schedule I includes the Supply and installation of 40 poles. Could you please share the corresponding specifications? As well as more information on their purpose and places where to install them	Item 1 the specifications are mentioned in schedule1 page 28 on the poles. During site visit bidders will be shown the place to be installed.
2.	Shall a zero energy grid injection system be included to guarantee that the grid-tie system does not feed power into KPLC's grid?	The grid tied will not feed back to KPLC but we might have an option to feed the 415V system incase of extra production. This can be discussed in the site visit.
3.	Could you please share the specifications of the grid-tie solar system (required capacity, connected loads and load profile to work on the system's design)?	Item 3, we are sending an addendum on the sizing. The load profile will be shared in the site visit.

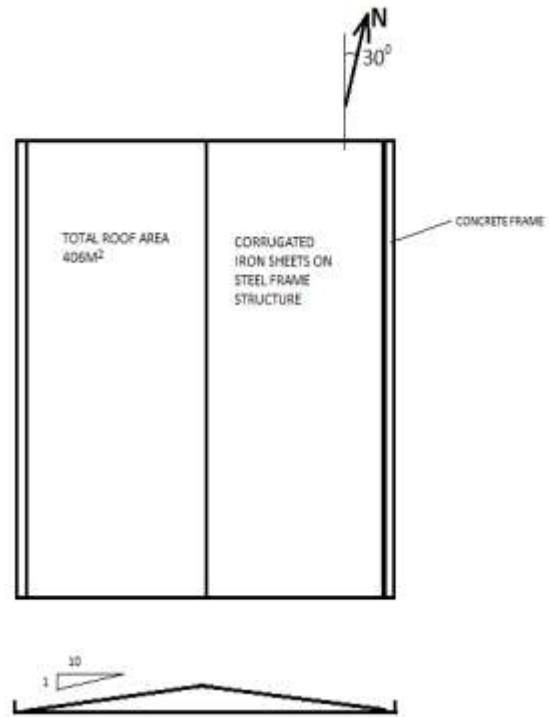
CLAUSE	CLARIFICATION
INSTRUCTIONS TO TENDERERS REFERENCE Clause 2.5.1 pg. 14	The Procuring entity will respond in writing to any request for clarification of the tender documents, which it receives not later than five (5) days prior to the deadline for the submission of tenders.

SCHEDULE II: GRID - TIE SYSTEM FOR KIPEVU POWER STATION OFFICE BLOCK

Based on the requirements reviewed for this schedule, KenGen would like to issue the following clarification with regards to scope of work:
Based on the load requirement for the kipevu power station office block, the grid tie system sizing shall be of 40kW grid-Tie. Please take note of the following additional information:

ITEM	SPECIFICATION
System Load	40 kW
Roofing Area	406 M ²

Roof Orientation



All other requirements of schedule II remain the same

All other terms and conditions remain unchanged

ACKNOWLEDGEMENT OF CLARIFICATION NO. 1

We, the undersigned hereby certify that the addendum is an integral part of the document and the alterations set out in the Addendum have been incorporated in the tender proposal.

Signed.....

Tenderer.....