

ALL DIMENSIONS AND LEVELS ARE TO BE VERIFIED ON SITE BY THE CONTRACTOR BEFORE COMMENCING ANY WORK

THE COPYRIGHT IN THIS DRAWING, INCLUDING THE DESIGN AND DETAILS SHOWN HEREON, IS RESERVED BY THE ENGINEERS.

THIS DRAWING IS NOT TO BE USED IN WHOLE OR PART OTHER THAN FOR THE INTENDED, PURPOSE AND PROJECT, AS DEFINED ON THIS DRAWING. REFER TO THE CONTRACT FOR FULL TERMS AND CONDITIONS.



GENERAL NOTES

- ALL CONCRETE TO BE CLASS 25 UNLESS OTHERWISE STATED
- REINFORCEMENT TO BE HIGH YIELD SQUARE TWISTED "Y" AND MILD STEEL ROUND "R" AS INDICATED
- MINIMUM COVER TO REINFORCEMENT TO BE;

SLABS	=30mm
WALLS	= 50mm
FOUNDATIONS	=50mm
BEAMS	=30mm
- ALL FOUNDATIONS TO BE TAKEN DOWN TO FIRM BEARING STRATA TO ENGINEER'S APPROVAL
- FOUNDATIONS DESIGNED FOR ALLOWABLE BEARING PRESSURE OF 150 KN/m²
- MINIMUM LAP LENGTH TO BE 50 TIMES BAR DIAMETER & STAGGERED
- ALL THE REINFORCEMENT TO BE INSPECTED BY THE STRUCTURAL ENGINEER BEFORE CONCRETING

No	DATE	DETAILS	Chd	Appd
REVISIONS				

Kenya Electricity
Generating Company Ltd.
OLKARIA GEOTHERMAL PROJECT
Moi southlake road
P.O. Box 785-20117
Naivasha, KENYA

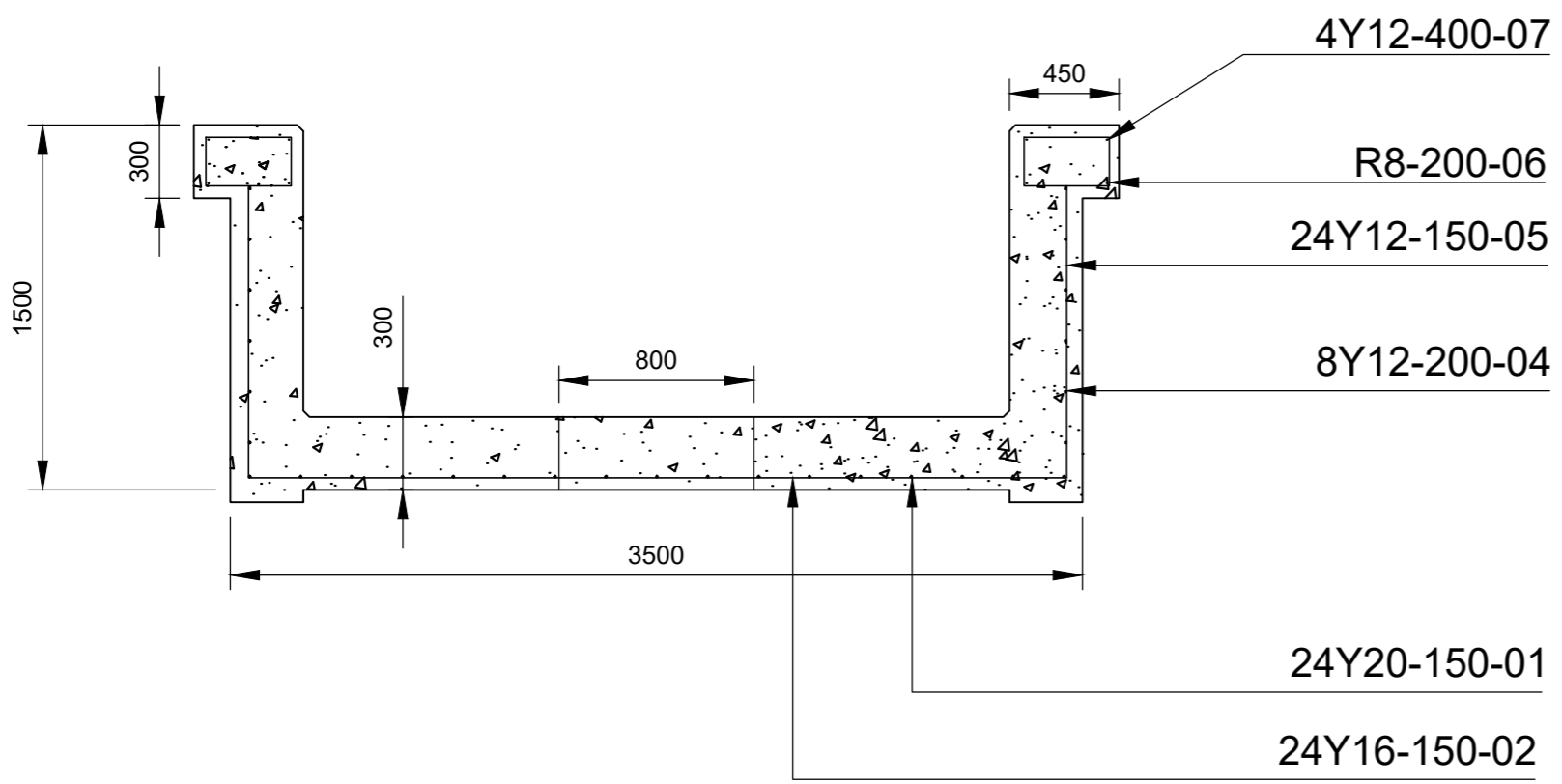
APPROVALS	NAME	SIGN	DATE
Designed by:			
Drawn by:			
Checked by:			
Recomm. by:			
Approved by:			

TYPICAL CELLAR DESIGN

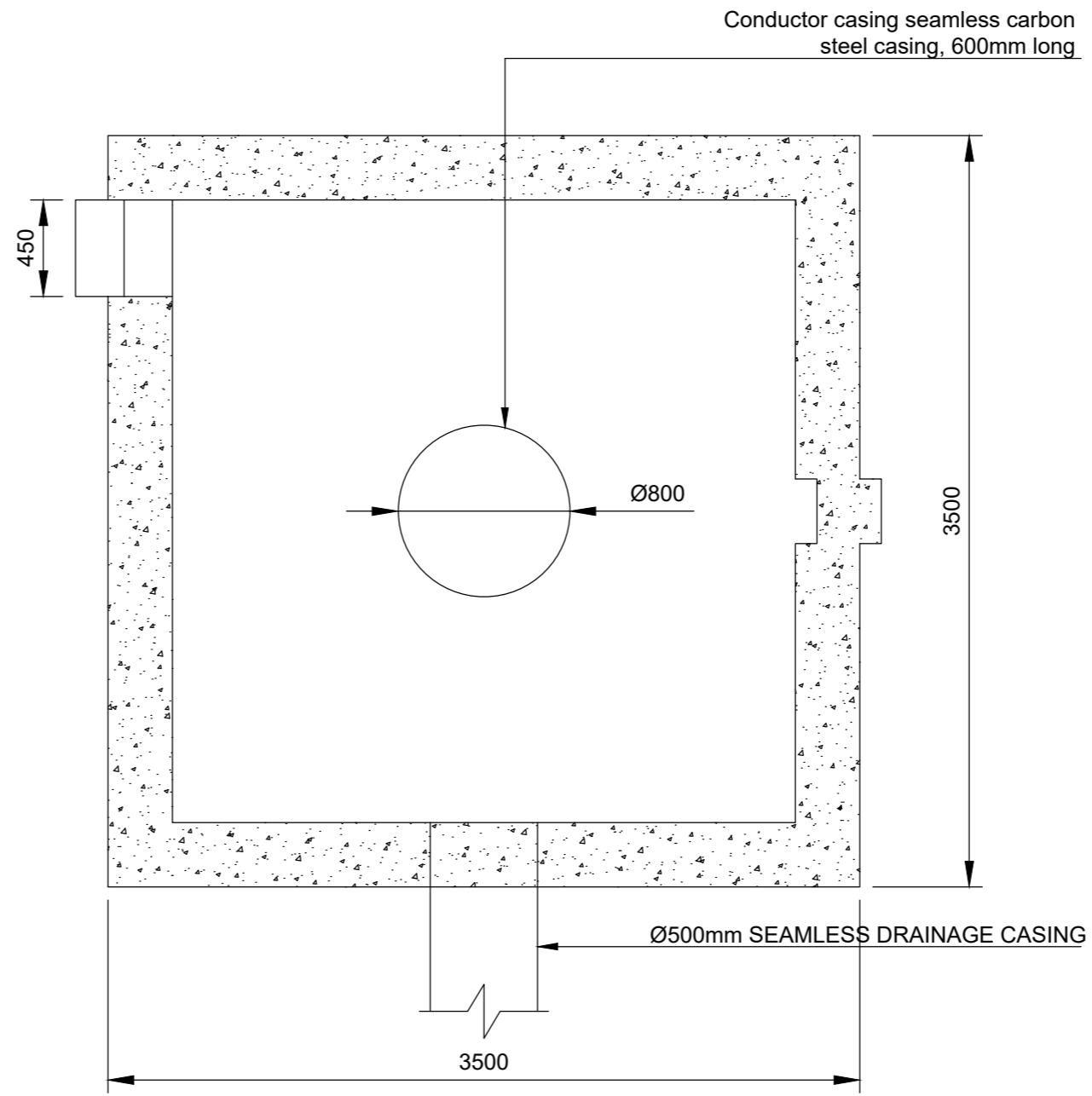
Description

Scale: 1:30 Date: NOVEMBER 2015

Project No: KGN-INFRA-DRILLING-001 Drg. No: L01



CELLAR REINFORCEMENT DETAILS
SCALE 1:30



CELLAR LAYOUT
SCALE 1:30