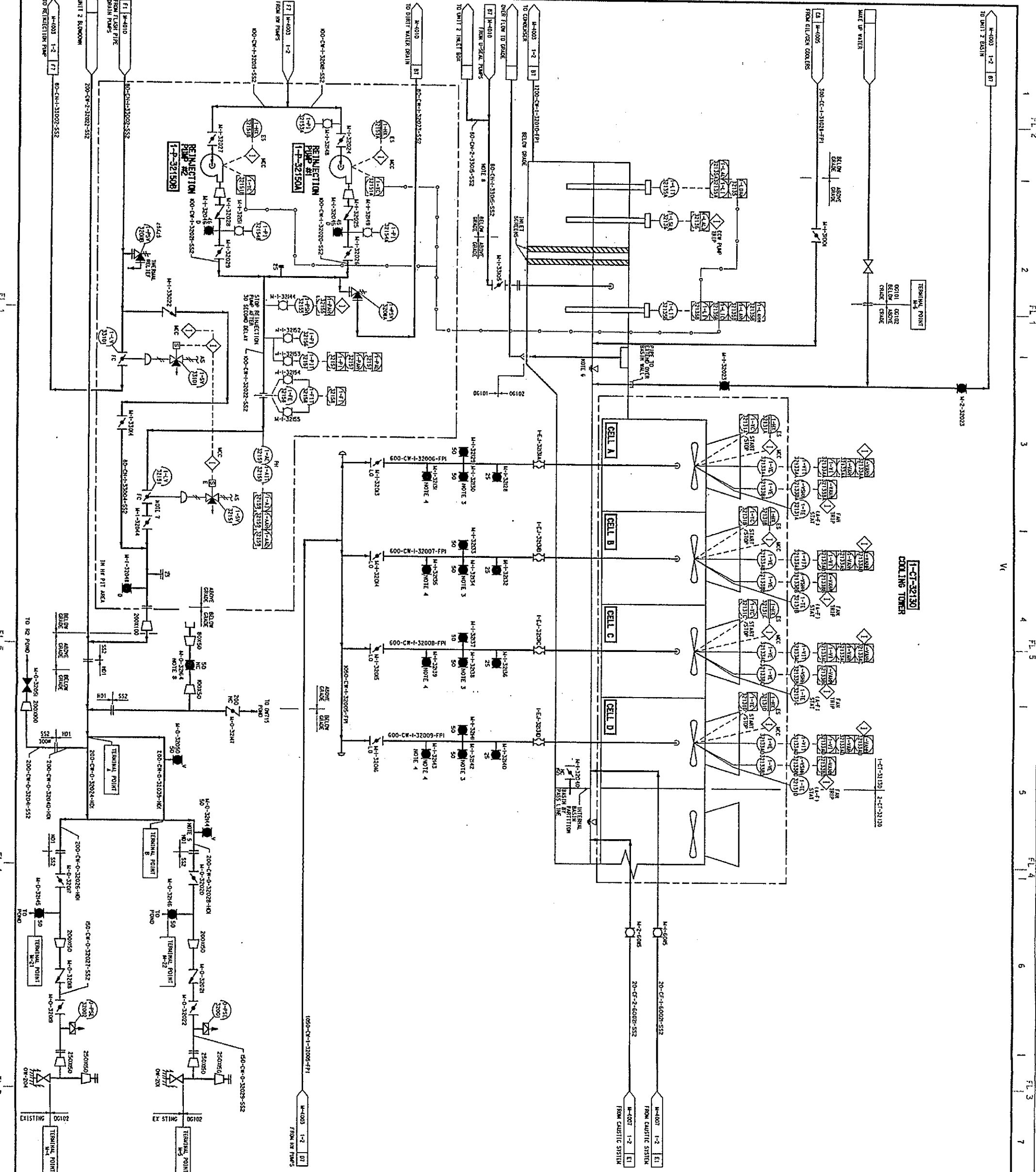


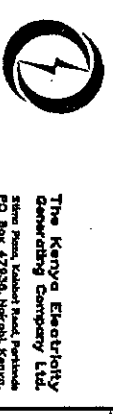
THIS DRAWING IS PREPARED BY POWER ENGINEERS, INC. FOR A SPECIFIC PROJECT. TAKING INTO ACCOUNT THE SPECIFIC AND UNUSUAL REQUIREMENTS OF THE PROJECT. REUSE OF THIS DRAWING OR ANY INFORMATION CONTAINED IN THIS DRAWING FOR ANY INFORMATION IS PROHIBITED UNLESS WRITTEN PERMISSION FROM BOTH POWER AND POWER'S CLIENT IS GRANTED.

PET INTERNAL DISCUSSION REVIEW				
ELECT	STRUC	TAC	MECH	CAD



- NOTES:**
1. REFER TO GENERAL NOTES ON DRAWING M-4001-4/4.
  2. SEE DRAWING M-011 FOR COOLING TOWER FIRE SYSTEM P & ID INFORMATION.
  3. INSTALL TWO (2) 50mm (2") BALL VALVES FOR FLOW ANALYZER FOR TESTING 90° APART ON RISER DOWNSTREAM OF BUTTERFLY VALVE. INSTALL 25mm (1") BALL VALVE DOWNSTREAM OF VALVES FOR STATIC PRESSURE TEST POINT.
  4. INSTALL 50mm (2") BALL VALVE FOR TEMPORARY ANNUBAR CONNECTION.
  5. LOCATE VENT VALVE ON HIGH POINT OF LINE.
  6. OVERFLOW WEIR AND DISCHARGE PIPE TO BE DESIGNED AND INSTALLED BY 06101.
  7. 1-1-V-32151 IS CLOSED WHEN REINJECTION PUMPS ARE NOT RUNNING TO PREVENT SIPHONING.
  8. EMERGENCY BRINE DISPOSAL TIE-IN. INSTALL 50mm (2") BALL VALVE WITH 3"-150# FLANGE CONNECTION.

Rev	Reason	By	Chk	App.	Date
1	REINJECTION MODIFICATIONS-GOR 86	JLB	CFC	TDD	1/20/04
2	CON 55 & REV CHEMICAL INJECTION	DLF	CFC	TDD	3/20/04
3	GENERAL REVISIONS	DLF	ME	TDD	3/20/04
4	ISSUED FOR CONSTRUCTION	DLF	CFC	TDD	1/10/04



**Kengen**  
The Kenyan Electricity Generating Company Ltd.  
25th Floor, Victoria Hotel, Parklands  
PO Box 47934, Nairobi, Kenya  
Telephone: 254-20-274222, Fax: 254-20-274244

Proj. No. 12571-102-M-CW-4003-2/2

Consultants: **SINCLAR KNIGHT MEZ**  
Sinclair Knight Merz Ltd.  
Sub-Consultants: **Howard Humphreys** (Kenya) Ltd.  
Consulting Engineers: **PB** (Kenya) & Partners Limited

Contractor: **MITSUBISHI HEAVY INDUSTRIES, LTD.**  
Mitsubishi Shipyard and Machinery Works

LAND TUBELINE DESIGNING SEC. ORDER ITEM  
POWER PLANT ENG. DEPT.

Scale: Drawn: Approved: Checked: Approved:

Scale: Drawn: Approved: Checked: Approved:

Job: **OLKARIA II GEOTHERMAL POWER PRODUCT CONTRACT 06102: POWER STATION MECHANICAL & ELECTRICAL PLANT**

Title: **CIRCULATING WATER SYSTEM**

Sheet: **SHEET 2**

Drawn: M-4003

Scale: 2-2