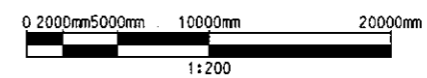
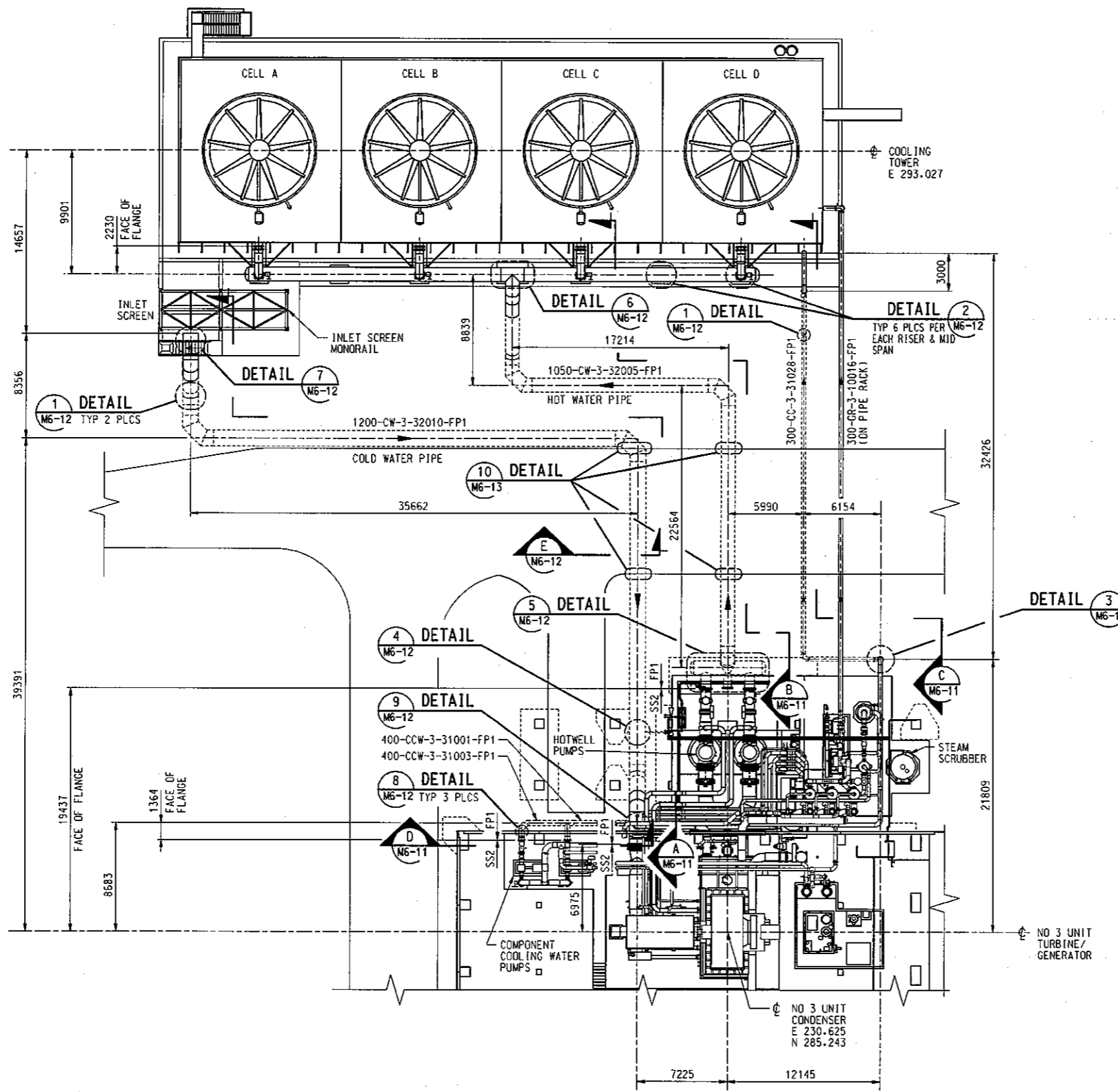


Verify All Dimensions Prior to Construction - Do not scale

NOTES:

- CONTRACTOR SHALL REFER TO THE PIPING ISOMETRIC DRAWINGS FOR DIMENSIONAL INFORMATION ON FIELD INSTALLED PIPING. CONTRACTOR SHALL INSTALL PIPE PER VENDOR INSTALLATION PROCEDURES.
- ELEVATIONS ARE BASED ON FINISH FLOOR IN TURBINE HALL. BENCHMARK EL= 2005.100 MSL.
- UNDERGROUND STAINLESS STEEL U-SEAL LINE IS NOT SHOWN FOR CLARITY. REFER TO PIPING ISOMETRIC DRAWING FOR ROUTING. TO BE INSTALLED AFTER FRP LINES AND BEFORE ROAD/ DRAINAGE STRUCTURES.



12/30/2008
 db.loddes
 \\boipds\pdsocm\113004\dwg\mechanical\55okml_13.dgn

DISCIPLINE REVIEW			
DISC	DATE	INIT	CD

THIS DRAWING WAS PREPARED BY POWER ENGINEERS, INC. FOR A SPECIFIC PROJECT. TAKING INTO CONSIDERATION THE SPECIFIC AND UNIQUE REQUIREMENTS OF THE PROJECT, REUSE OF THIS DRAWING OR ANY INFORMATION CONTAINED IN THIS DRAWING FOR ANY INFORMATION IS PROHIBITED UNLESS WRITTEN PERMISSION FROM BOTH POWER AND POWER'S CLIENT IS GRANTED.

Rev	Reason	By	Chk	App.	Date
0	ISSUED FOR CONSTRUCTION	AED	KPR	TDD	30/DEC/08

Client: **The Kenya Electricity Generating Company Ltd.**
 Stima Plaza Phase 3
 Kolobot Road,
 Parklands
 P.O. Box 47936-00100
 Nairobi, KENYA
 Phone: +254-20-3666000
 Fax: +254-20-3666565

Project Document No. PEI-ME-CW-PLN-011

Consultants: **SKM**
Copyright: The contents and information contained in this document are the copyright of Skm Engineering Ltd. Use or copying of this document in whole or in part without the written permission of Skm Engineering Ltd. constitutes an infringement of copyright.

Sub-Consultants: **Howard Humphreys (BA) Ltd**
 Consulting Engineers.

Contractor: **MITSUBISHI HEAVY INDUSTRIES, LTD.**

ORDER: _____ ITEM: _____

MITSUBISHI ELECTRIC CORPORATION
 ENERGY AND INDUSTRIAL SYSTEMS CENTER

POWER ENGINEERS

Scale: 1:200
 Designed: AED | Checked: KPR
 Drawn: AED | Approved: TDD

Job: **OLKARIA II UNIT 3 EXTENSION
 GEOTHERMAL POWER PROJECT**

Title: **UNDERGROUND FRP
 PIPING PLAN**

Dwg. No. **M4-13** Rev. **0**

A1 15340811